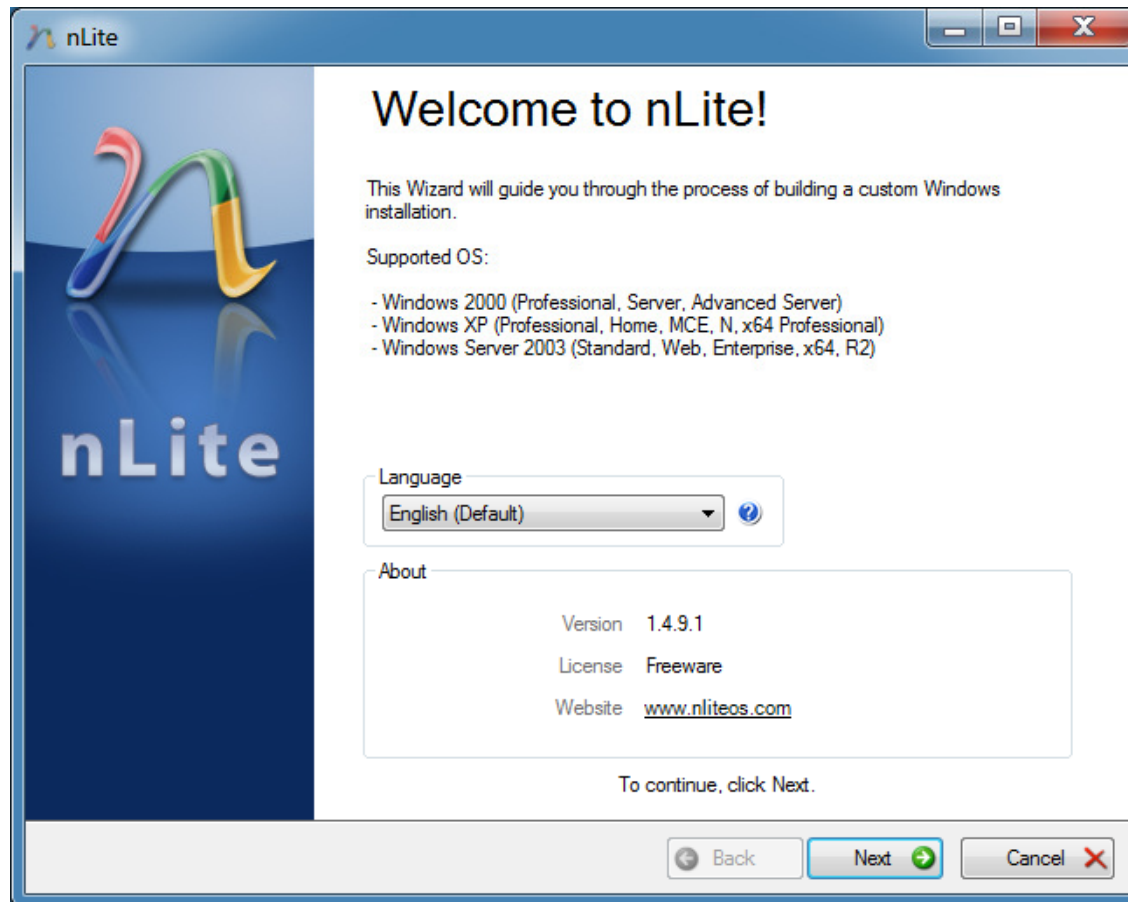


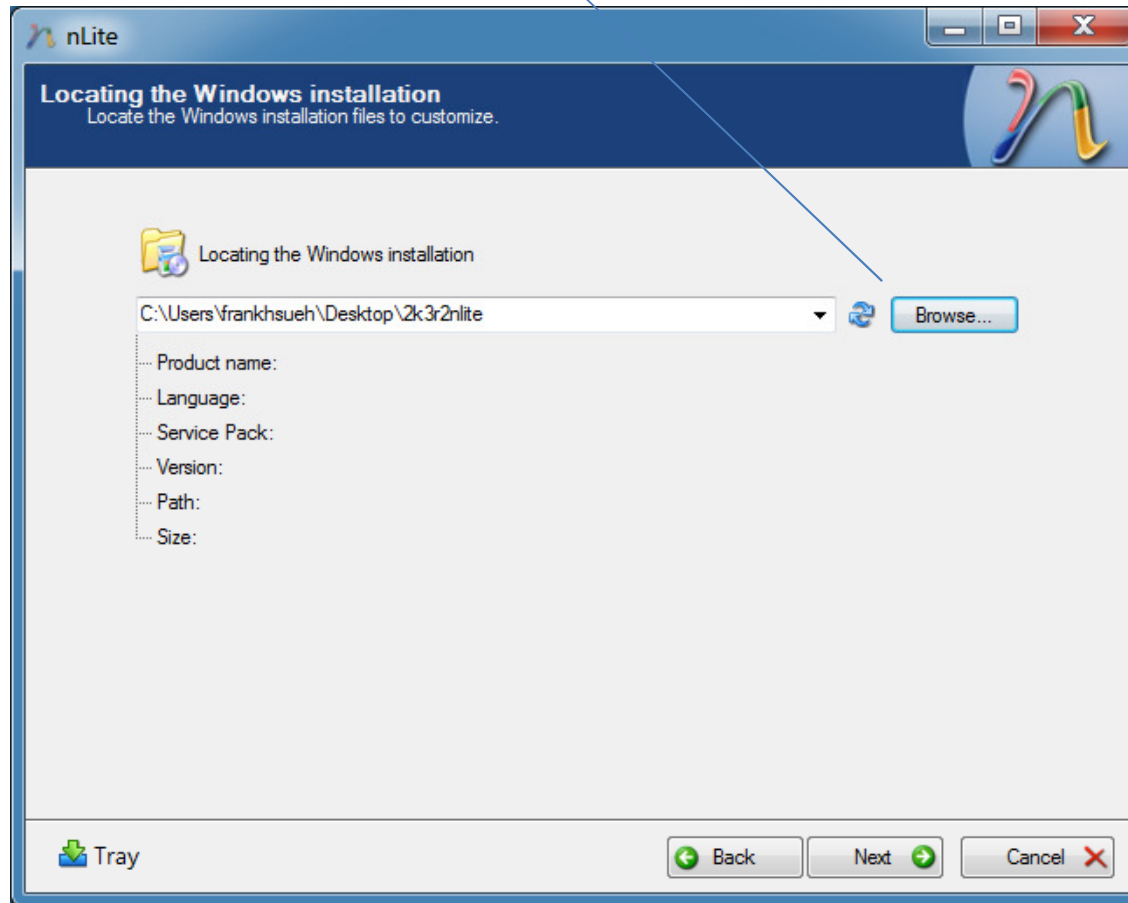
nLite Windows 2003 slipstream instruction

For installing Windows 2003 on X9 motherboards with C600/C200 series
chipset without loading driver from floppy drive, and steps to install
Windows onto Intel RAID



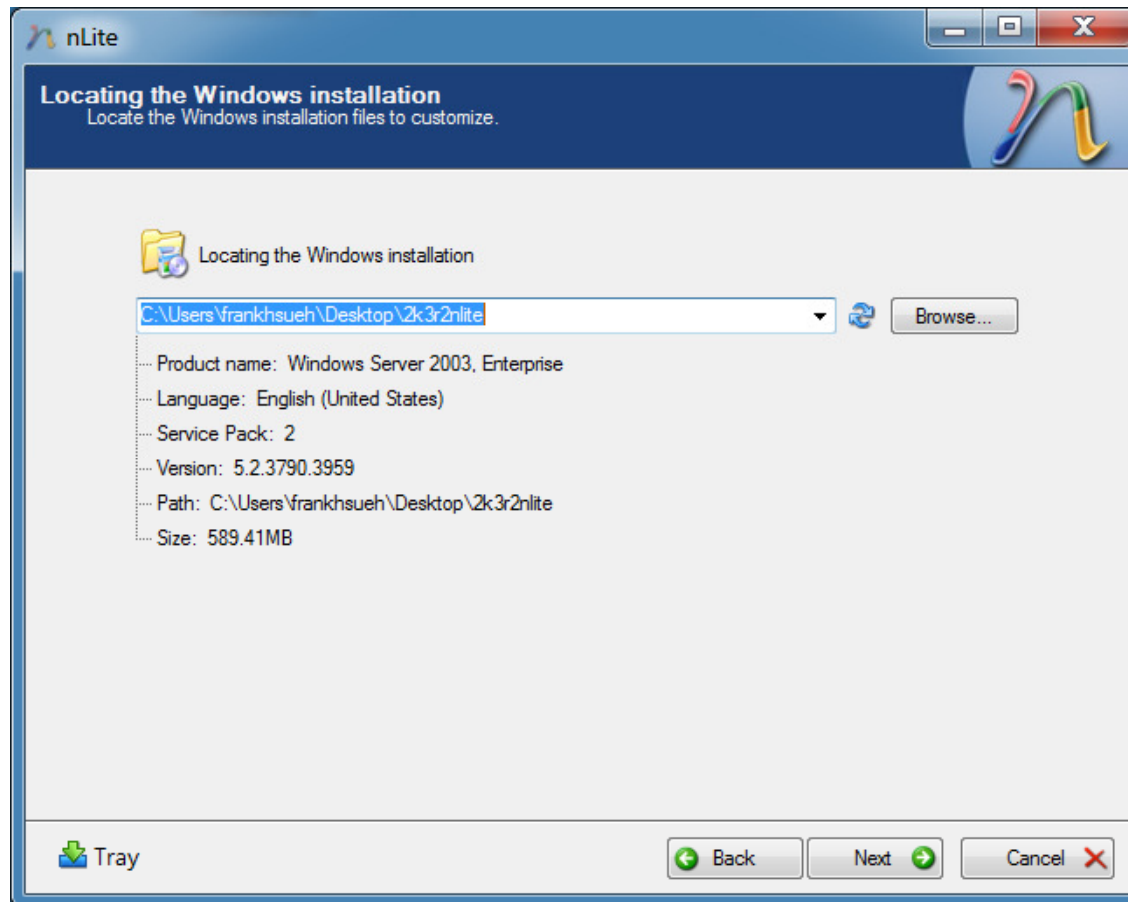
Click next to continue

1. Insert your Windows installation CD and browse to the i386 folder



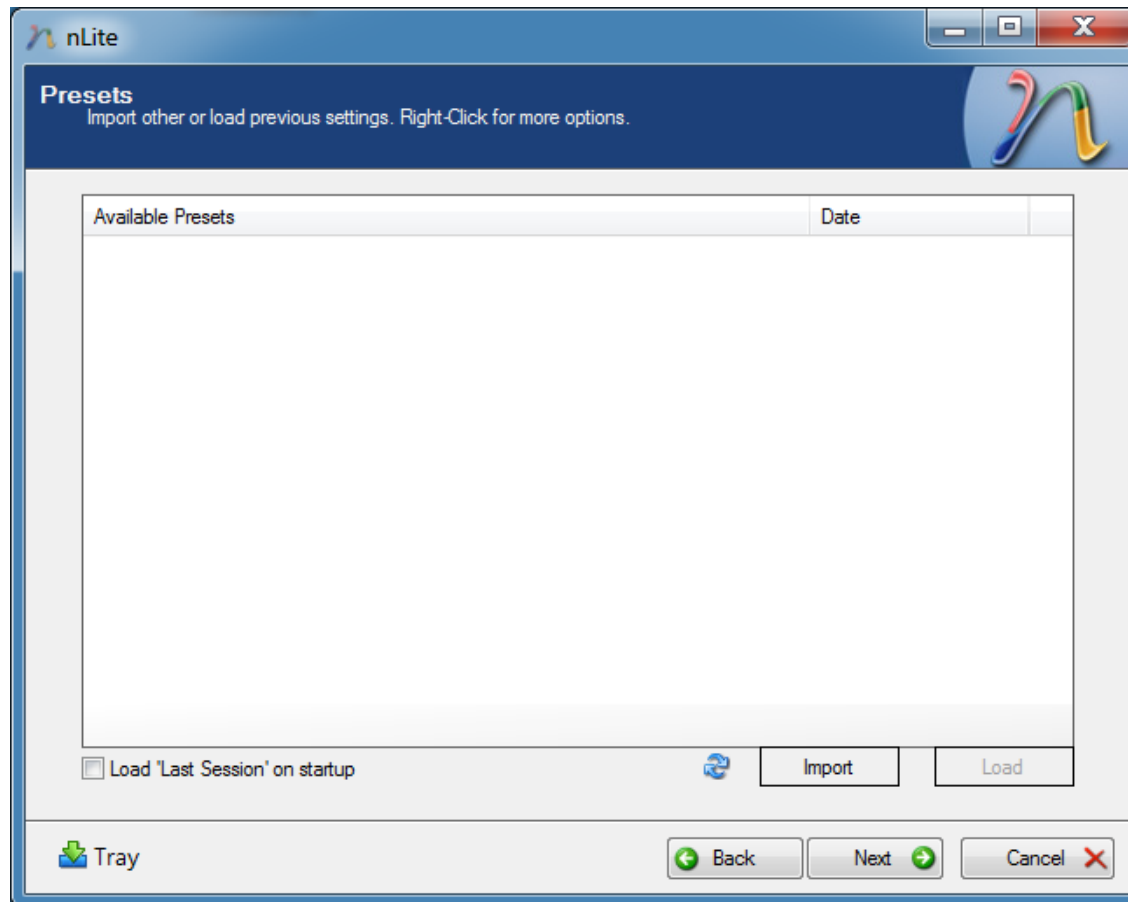
2. click next to continue

1. nLite will read the i386 folder and gather Windows information

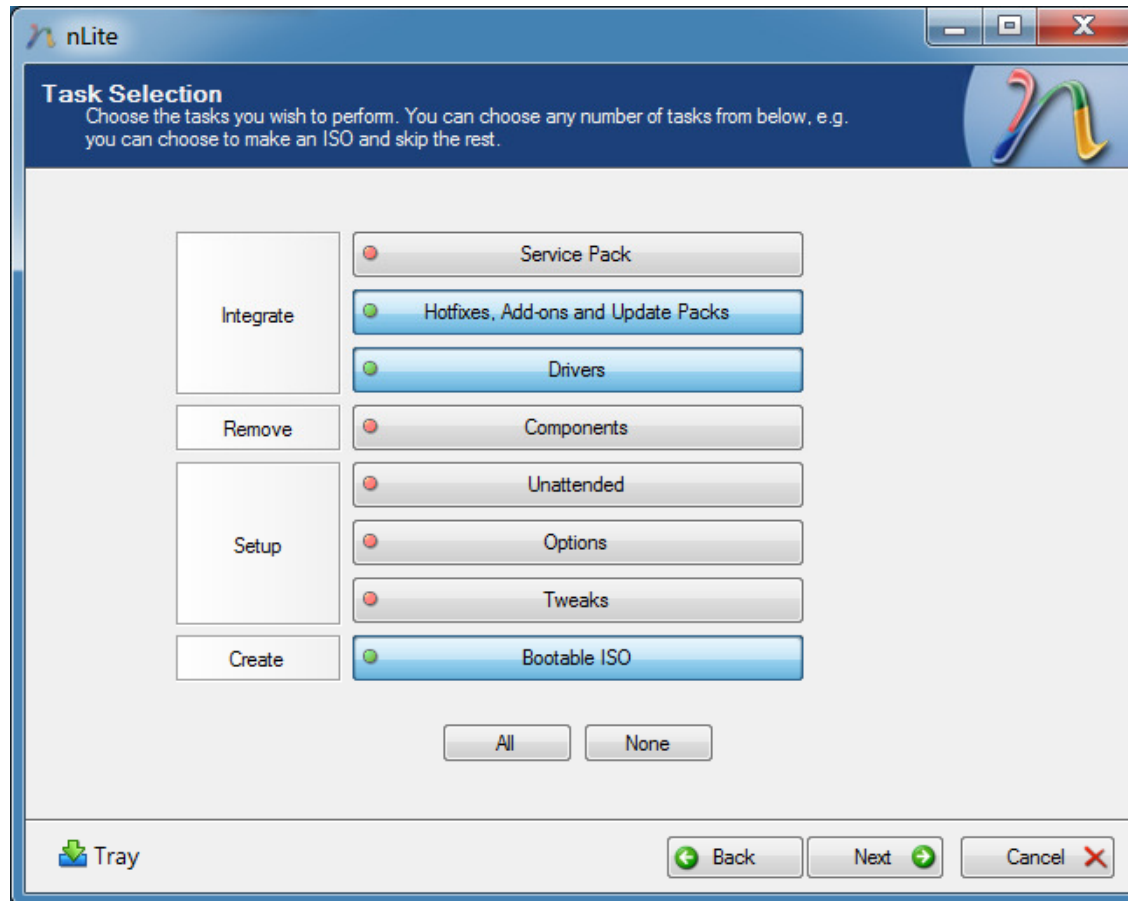


2. click next to continue

1. Ignore any presets and click next to continue

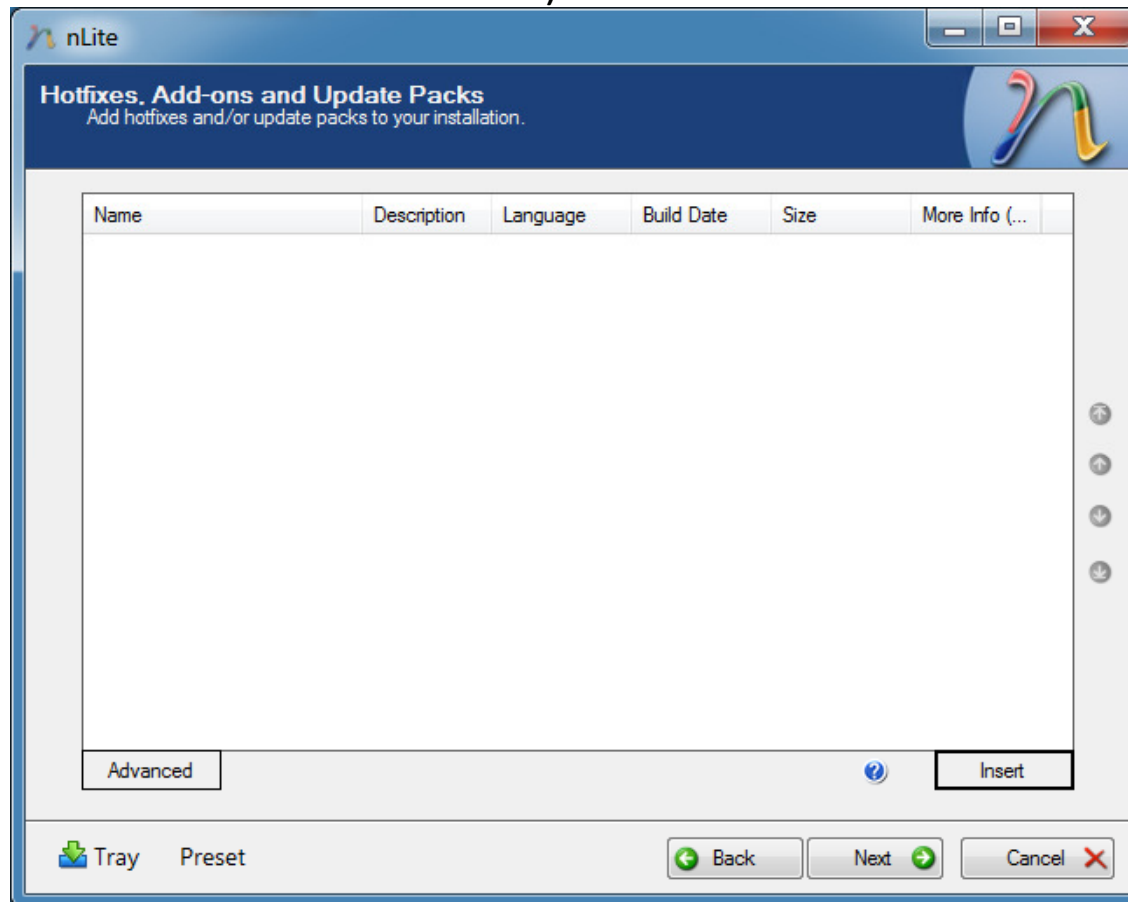


1. Select as follows and click next to continue
(Select Hotfixes. Add-ons and Update Packs if applicable)



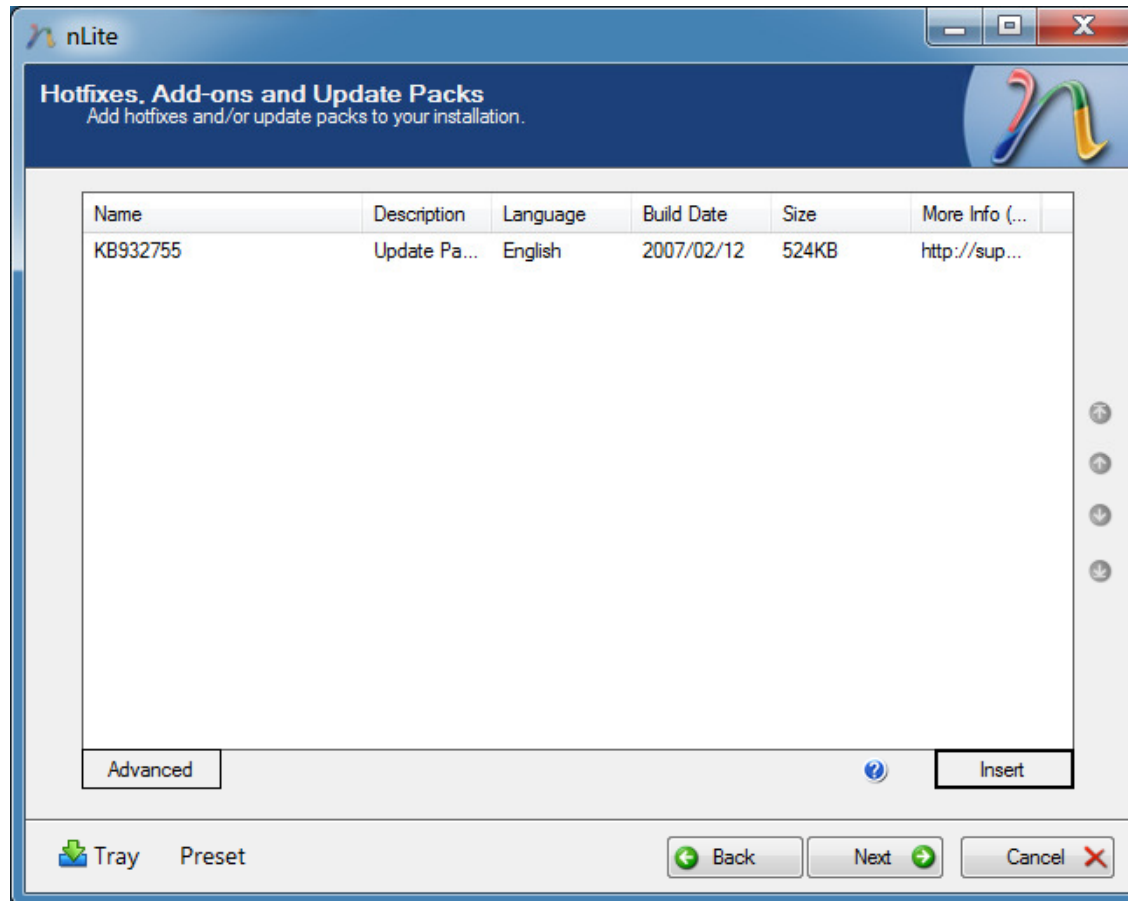
If using onboard Intel RAID:

1. Click on Insert and browse to include the Windows hotfix (file name: WindowsServer2003-KB932755-x86-ENU.exe)

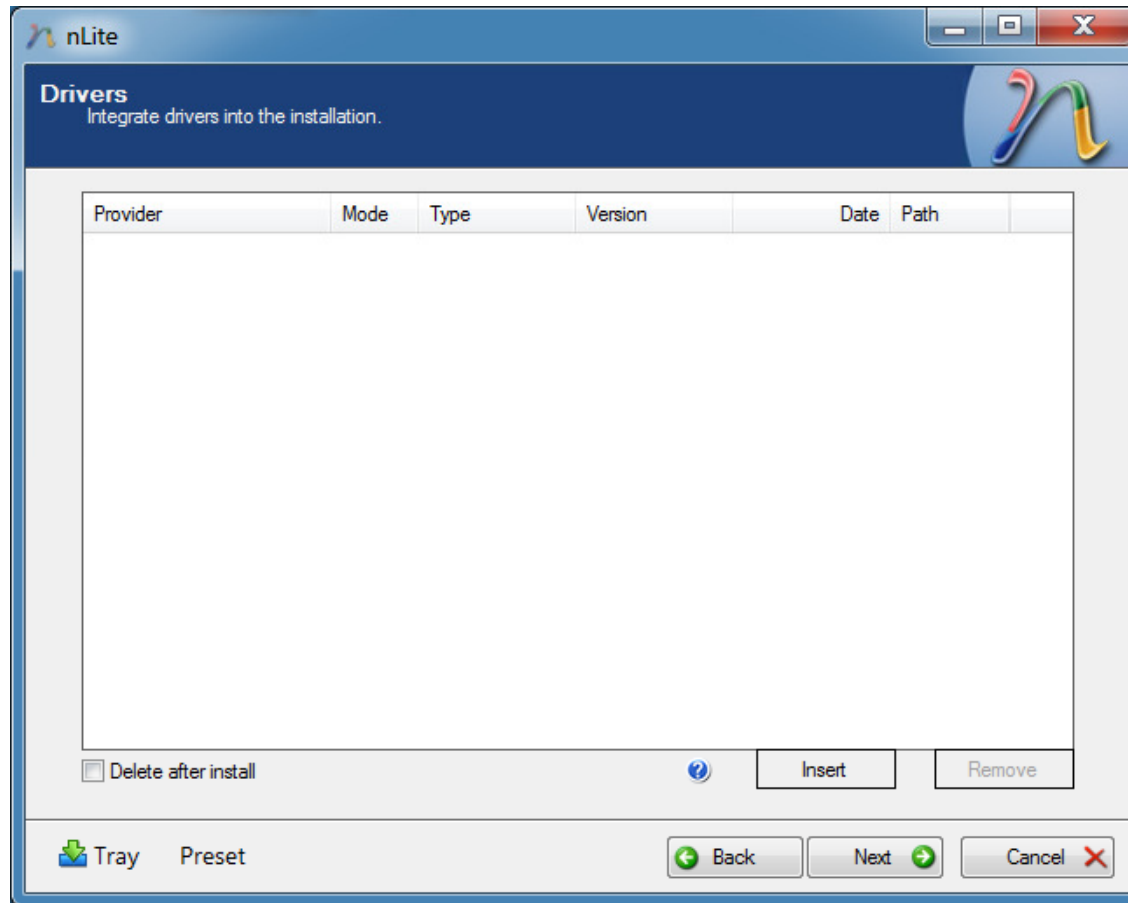


2. click next to continue

Here you see the hotfix has been included

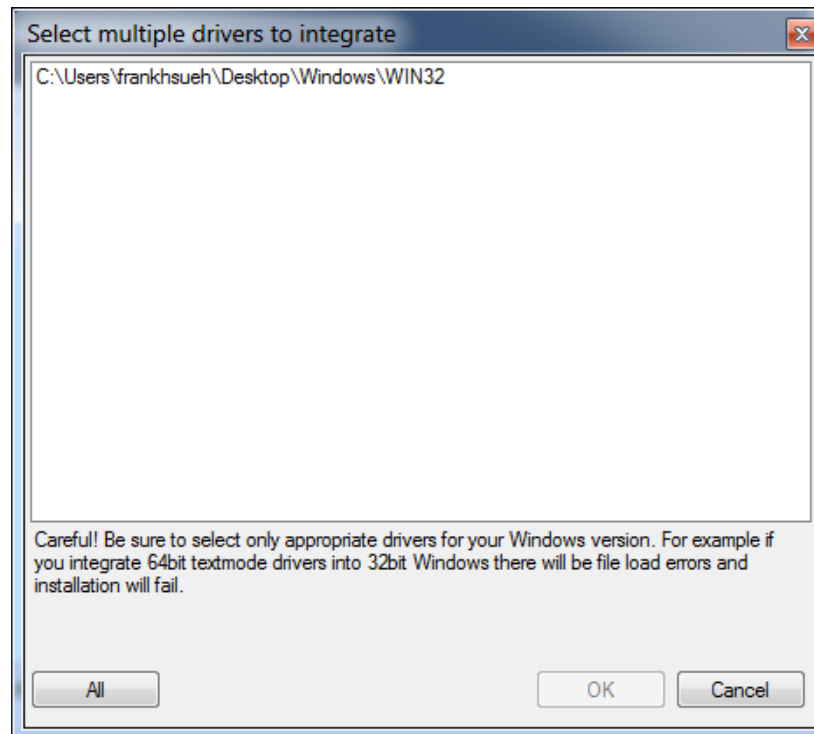


1. Next to include Drivers. This is the most important step. Click on Insert and choose “multiple driver folders”



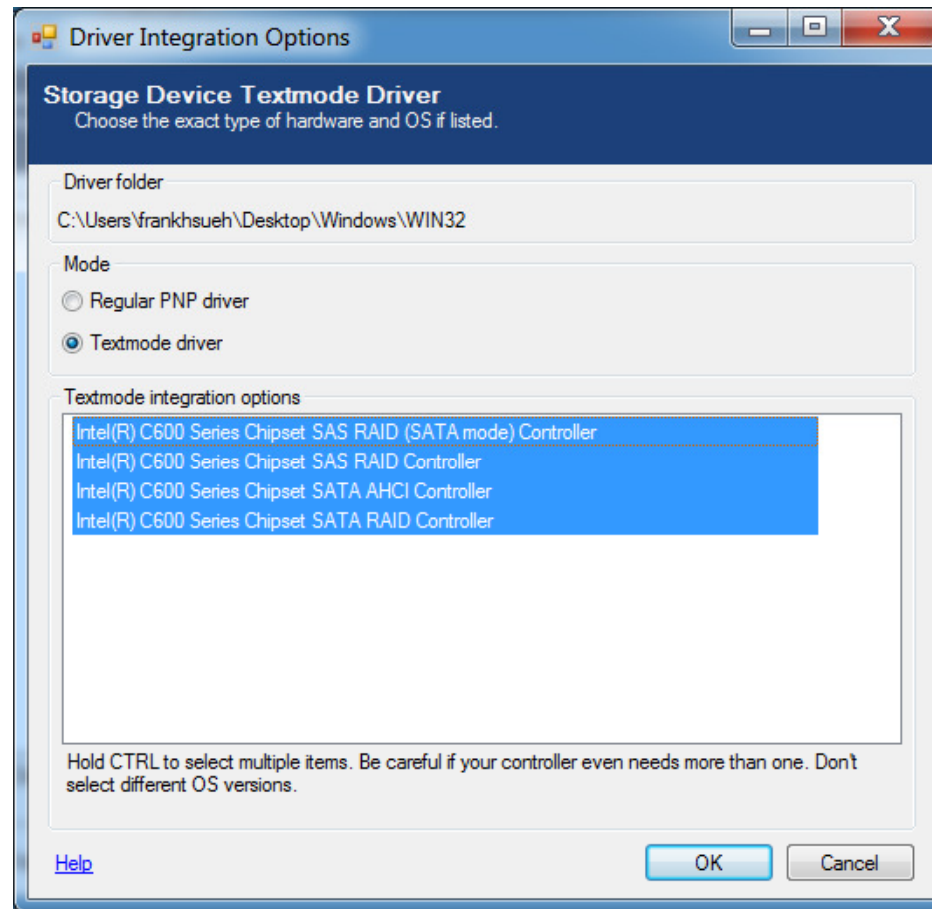
2. click next to continue

1. Browse to the specific chipset folder and go to
\Windows\WIN32 OR Windows\WIN64 driver
folder. Include ONLY ONE ARCHITECTURE DRIVER.
Then select the architecture driver (WIN32
shown)



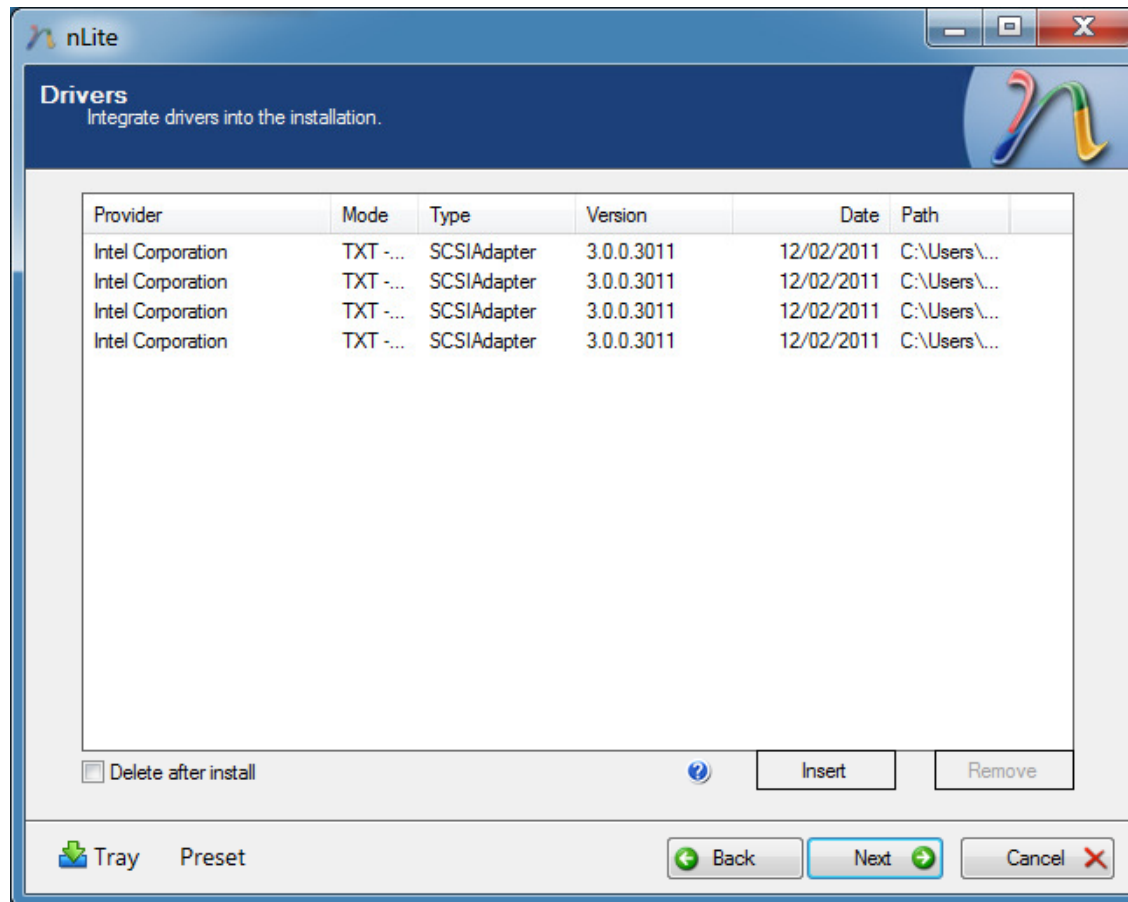
2. click OK to continue

1. Next select to include all drivers (hold Ctrl to select all, C600 series chipset shown)

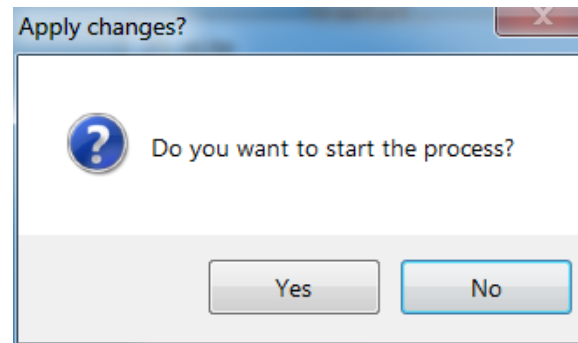


2. click next to continue

1. Here you will see all the drivers included

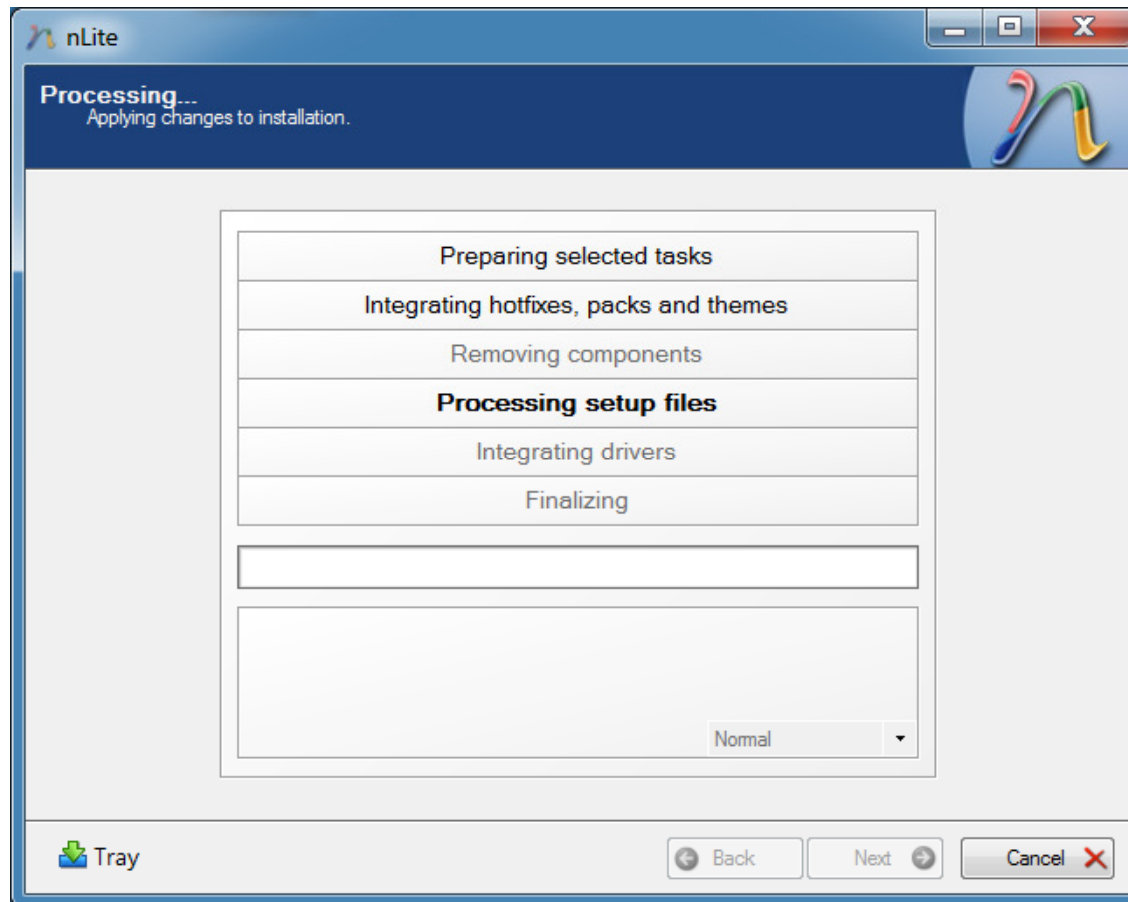


2. click next to continue



1. click Yes to continue

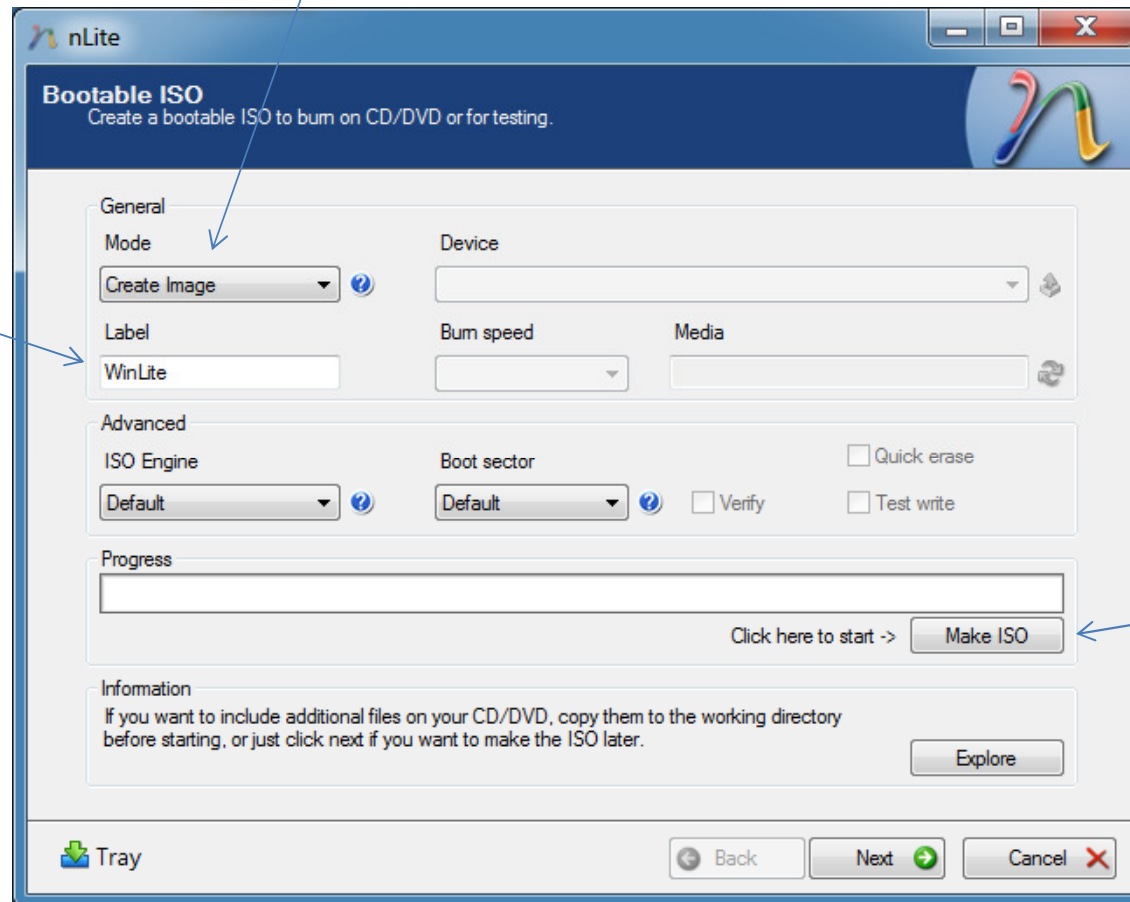
1. Here nLite will prepare the packages



2. Once the package is prepared, click next to continue

1. Here you can create a bootable ISO image. Make sure the mode is set to Create Image

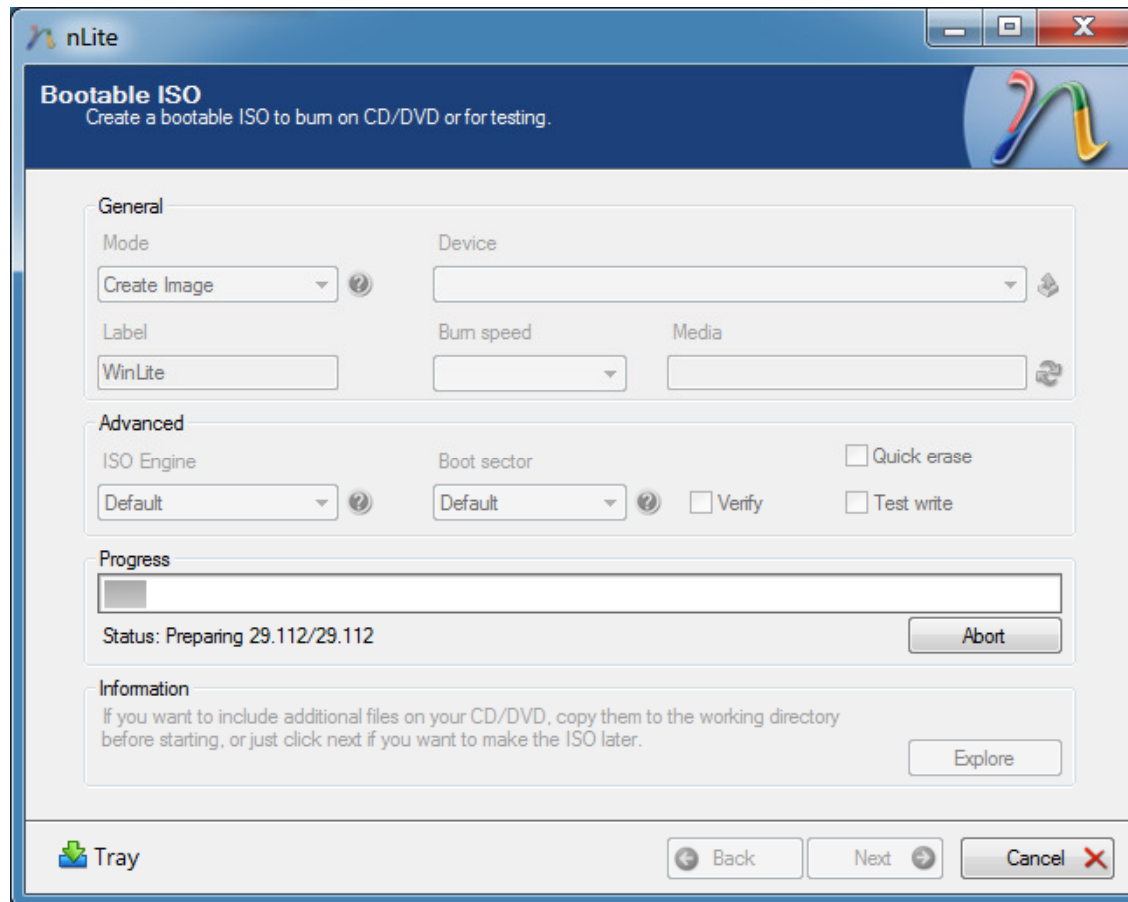
2. You can edit the image label here, or leave it as is

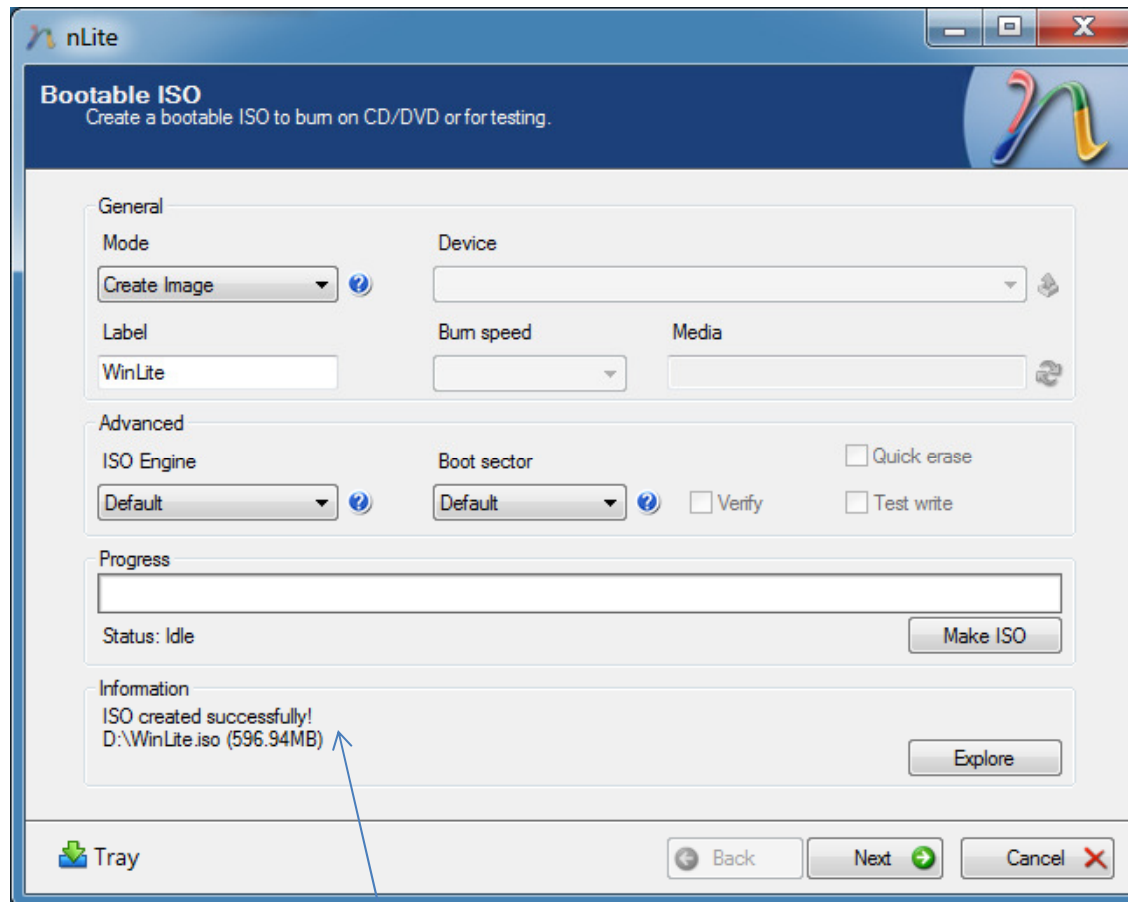


3. Click Make ISO to select where you want to save the ISO image

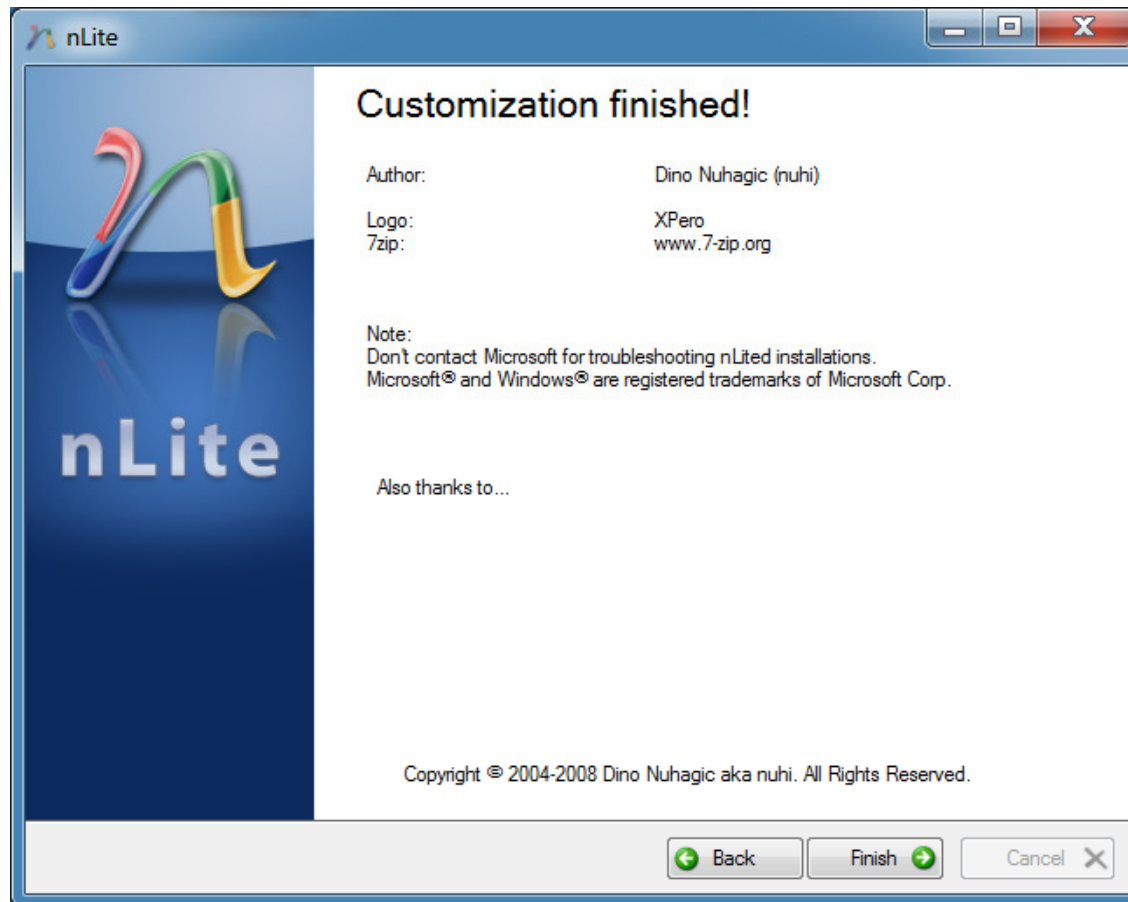
4. After you select where to save the image, click OK and the creation process will begin

Here nLite is creating the ISO image





Once the ISO is created successfully, click Next to continue. The creation process should take no more than 10 minutes



Click Finish to complete the customization and exit nLite

1. After making the bootable ISO from nLite, you can burn the ISO to a CD
2. Go into BIOS and go to SCU settings to disable SCU (if not using SCU)
3. Change the SATA mode to RAID
4. Save the BIOS changes and reboot
5. DO NOT create any RAID with Ctrl+I
6. Insert the CD and boot from it
7. Once the installer is booted, DO NOT PRESS F6 to load driver (driver is already included in the CD that you made). Instead, when you see the F6 prompt, PRESS F7 to disable ACPI during installation.
8. Once all the drivers are loaded, you should be able to see all drives show up
9. Format all drives and only install one drive
10. You should be able to proceed with the installation
11. After Windows is installed, install the chipset, LAN, and video drivers, then reboot
12. After reboot, install .net framework 3.5 (MUST BE 3.5)
13. Install Intel RSTe. Reboot when completed.
14. After reboot, launch Intel RSTe in Windows and create a new RAID volume consists of necessary drives
15. RSTe will then migrate the data to all drives. This process cantake a while, depending on the RAID configuration.
16. Once the migration is done, you will have Windows 2003 in RAID